



**It's Back!**

# Osaka Okonomi Gyudon

Experience the authentic flavor of Osaka's iconic okonomiyaki. This topping features sweet cabbage, rich okonomiyaki sauce, a creamy mayo, and a sprinkle of bonito flakes and aonori. It's a favorite among Sukiya Japan's limited-time offerings.

121

すき家の

## Half Boiled Egg Osaka Okonomi Gyudon

**M \$7.8** S \$7.4 XM \$10.2  
L \$10.2 XL \$12.2

120

すき家の

## Osaka Okonomi Gyudon

**M \$6.8** S \$6.4 XM \$9.2  
L \$9.2 XL \$11.2

121

## Half Boiled Egg Osaka Okonomi Gyudon & Chicken Karaage Combo

**M \$12.3**



# GYUDON

牛丼



PORTION SIZE			
<b>S</b>	<b>M</b>	<b>Standard Size</b>	
Beef: 80% of M Size Rice: 65% of M Size			
<b>L</b>	<b>XL</b>	Beef: 165% of M Size Rice: 75% of M Size	Beef: 200% of M Size Rice: 125% of M Size

Our signature gyudon is made with perfectly sliced beef simmered in a sweet and savory shoyu-based sauce made with our secret recipe. It is served on top of delicious, fluffy, and warm Japanese rice.

**Gyudon 100**  
牛丼 **M \$4.9**  
S \$4.5 XM \$7.3 L \$7.3 XL \$9.3

Signature dish of Sukiya. Tenderly cooked thin sliced beef simmered in our secret recipe sauce, served with hot and fluffy Japanese rice.

**Most popular topping in Japan!**



108

**Melted Cheese Gyudon**

とろーり3種のチーズ牛丼

**M \$7.5**

S \$7.1 XM \$9.9 L \$9.9 XL \$11.9

Our triple cheese gyudon with savory melted cheese on top. Japan sukiya's current most popular topping.



104

**Kimchi Gyudon**

キムチ牛丼

**M \$6.5**

S \$6.1 XM \$8.9 L \$8.9 XL \$10.9

The very first and long seller topping of sukiya in Japan. Carefully selected kimchi on top of your favorite gyudon.



107

**Half Boiled Egg Gyudon**

おん玉牛丼

**M \$5.9**

S \$5.5 XM \$8.3 L \$8.3 XL \$10.3

Half boiled egg that matches perfectly and complements the taste of gyudon.



101

**Half Boiled Egg Spring Onion Gyudon**

ねぎ玉牛丼

**M \$6.9**

S \$6.5 XM \$9.3 L \$9.3 XL \$11.3

Gyudon with fresh spring onion complemented with sweet and spicy Korean chili pepper sauce and half-boiled egg. A very popular menu in Japan.



135

**Grated Daikon Gyudon with Ponzu Sauce**

おろしポン酢牛丼

**M \$6.5**

S \$6.1 XM \$8.9 L \$8.9 XL \$10.9

We've added a hit item to our main menu! Enjoy the refreshing and light flavour of Ponzu.



105

**Okra Gyudon with Dashi Sauce**

和風だし煮るオクラ牛丼

**M \$6.5**

S \$6.1 XM \$8.9 L \$8.9 XL \$10.9

Gyudon with sliced okra. The unique stime coming from okra which contains soluble fiber matches perfectly with our special sauce, giving it a refreshing after taste.



106

**Double Half Boiled Egg Gyudon**

ダブルおん玉牛丼

**M \$6.9**

S \$6.5 XM \$9.3 L \$9.3 XL \$11.3

2pcs half-boiled eggs topping on gyudon, for you who love egg!



100

**Gyudon & Green Veggies Combo**

牛丼青菜セット

**M \$6.9**

S \$6.5 XM \$9.3 L \$9.3 XL \$11.3



105

**Okra Gyudon with Dashi Sauce & Tofu Combo**

オクラ牛丼冷奴セット

**M \$10.0**

S \$9.6 XM \$12.4 L \$12.4 XL \$14.4



108

**Melted Cheese Gyudon & Shrimp Ball Miso Soup Salad Combo**

とろーり3種のチーズ牛丼海老団子みそ汁サラダセット

**M \$12.6**

S \$12.2 XM \$15.0 L \$15.0 XL \$17.0

Prices stated are inclusive of GST. The pictures are only for reference.

## Value Price Combo

すき家のお得なセット



青菜セット

**+\$2.0**



サラダセット

**+\$3.5**



冷奴セット

**+\$3.5**



Chicken Karaage Combo

からあげセット

**+\$4.5**

## Choice of Drink 16oz

- Fuze Tea Ice Lemon Tea (A)
- Coca-Cola Original Taste (A)
- Minute Maid Refresh Orange (A)
- Sprite (A)
- Green Tea (ICE/HOT) (A)
- Coca-Cola Zero Sugar (A)
- Dasani Bottled Water (A)

## Recommended Side Menu

- 601 ● Chicken Karaage (5pcs) (A) **\$7.5**
- 604 ● Green Veggies (A) **\$2.0**



# BEEF YAKINIKU BOWL

焼肉丼

100%  
コシヒカリ  
Koshihikari

PORTION SIZE

M Standard Size  
L Beef: M Size  
Rice: 125% of M Size  
XL Beef: 200% of M Size  
Rice: 125% of M Size

Thick cut beef marinated in our original yakiniku sauce and grilled to perfection. A perfect match for our fluffy and warm carefully selected Japanese rice.

## Beef Yakiniku Bowl 200

焼肉丼

M \$6.9 L \$7.5 XL \$11.9

Thick grilled beef with sweet and savory Yakiniku sauce on top of warm Japanese rice.

## 201 Half Boiled Egg Spring Onion Beef Yakiniku Bowl

ねぎ玉焼肉丼

M \$8.9 L \$9.5 XL \$13.9

Beef Yakiniku bowl with spring onion and sweet and spicy Korean chilli pepper sauce.



## 208 Melted Cheese Beef Yakiniku Bowl

とろーり3種のチーズ焼肉丼

M \$9.5 L \$10.1 XL \$14.5

Triple cheese Beef Yakiniku bowl with savory melted cheese.



## 207 Half Boiled Egg Beef Yakiniku Bowl

おん玉焼肉丼

M \$7.9 L \$8.5 XL \$12.9

Beef Yakiniku bowl with half boiled egg that matches well with the sweet taste of our Yakiniku sauce.



## 204 Kimchi Beef Yakiniku Bowl

キムチ焼肉丼

M \$8.5 L \$9.1 XL \$13.5

Beef Yakiniku bowl with our original Kimchi.



## 205 Okra Beef Yakiniku Bowl with Dashi Sauce

和風だし香るオクラ焼肉丼

M \$8.5 L \$9.1 XL \$13.5

Beef Yakiniku bowl with fresh okra and special sauce with refreshing aftertaste.



## 206 Double Half Boiled Egg Beef Yakiniku Bowl

ダブルおん玉焼肉丼

M \$8.9 L \$9.5 XL \$13.9

2pcs half boiled eggs for you who love half boiled eggs on your Beef Yakiniku bowl.



## 217 Grated Daikon Beef Yakiniku Bowl with Ponzu Sauce

おろしポン酢焼肉丼

M \$8.5 L \$9.1 XL \$13.5

We're adding a hit item to our main menu! Enjoy the refreshing and light flavour of Ponzu.



## 207 Half Boiled Egg Beef Yakiniku Bowl & Salad Combo

おん玉焼肉丼サラダセット

Rice (L) L \$12.0

Extra Meat (Double Portion) Rice (L) XL \$16.4



## 208 Melted Cheese Beef Yakiniku Bowl & Green Veggies Combo

とろーり3種のチーズ焼肉丼青菜セット

Rice (L) L \$12.1

Extra Meat (Double Portion) Rice (L) XL \$16.5



## 200 Beef Yakiniku Bowl & Shrimp Ball Miso Soup Chicken Karaage Combo

焼肉丼海老団子みそ汁からあげセット

Rice (L) L \$13.6

Extra Meat (Double Portion) Rice (L) XL \$18.0

Prices stated are inclusive of GST. The pictures are only for reference.

## Value Price Combo

すき家のお得なセット



青菜セット +\$2.0



サラダセット +\$3.5



豆腐セット +\$3.5



Chicken Karaage Combo からあげセット +\$4.5

## Choice of Drink 16oz

- Fuze Tea Ice Lemon Tea
- Coca-Cola Original Taste
- Minute Maid Refresh Orange
- Sprite
- Green Tea (ICE/HOT)
- Coca-Cola Zero Sugar
- Dasani Bottled Water

## Recommended Side Menu

- Chicken Karaage (5pcs) からあげ5個 \$7.5
- Green Veggies 青菜 \$2.0



# Japanese CURRY

すき家オリジナルの日本カレー

100%  
コシヒカリ  
Koshihikari

## PORTION SIZE

S  
Curry: 50% of M Size  
Rice: 65% of M Size

M  
Standard Size

L  
Curry: 150% of M Size  
Rice: 125% of M Size

In Japan, it is the most beloved food by locals. Please enjoy Japanese authentic curry rice in our original recipe.

## 303 Beef Curry Rice

牛あいがけカレー

**M \$8.9** S \$8.3 L \$10.8

Sukiya's original authentic curry rice with beef topping.

## 301 Chicken Karaage Curry Rice

からあげカレー

**M \$9.9** S \$9.3 L \$11.8

Curry rice with juicy Chicken Karaage.

## 302 Beef & Triple Cheese Curry Rice

牛あいがけ3種のチーズカレー

**M \$10.3** S \$9.7 L \$12.2

Curry rice with double toppings: beef and triple cheese.

## 304 Beef Yakiniku Curry Rice

焼肉カレー

**M \$11.3** S \$10.7 L \$13.2

Curry rice with our original Yakiniku.

## 305 Deluxe Curry Rice

DXカレー

**M \$13.3** S \$12.7 L \$15.2

Sukiya's authentic Japanese curry with beef, Chicken Karaage, and half boiled egg on top.

## 307 Half Boiled Egg Curry Rice

おん玉カレー

**M \$7.3** S \$6.7 L \$9.2

Curry rice with half boiled egg topping.

## 300 Curry Rice

カレー

**M \$6.3** S \$5.7 L \$8.2

Sukiya's original Japanese authentic curry rice.



## Beef Curry Rice & Salad Combo

牛あいがけカレーサラダセット

**M \$12.4**  
S \$11.8 L \$14.3



## Half Boiled Egg Curry Rice & Chicken Karaage Combo

おん玉カレーからあげセット

**M \$11.8**  
S \$11.2 L \$13.7



## Chicken Karaage Curry Rice & Green Veggies Combo

からあげカレー青菜セット

**M \$11.9**  
S \$11.3 L \$13.8

Prices stated are inclusive of GST. The pictures are only for reference.

## Value Price Combo

すき家のお得なセット



青菜セット **+\$2.0**



サラダセット **+\$3.5**



冷感セット **+\$3.5**



からあげセット **+\$4.5**

## Choice of Drink 16oz

- Fuze Tea Ice Lemon Tea (A)
- Coca-Cola Original Taste (B)
- Minute Maid Refresh Orange (C)
- Sprite (D)
- Green Tea (ICE/HOT) (A)
- Coca-Cola Zero Sugar (B)
- Dasani Bottled Water (C)

## Recommended Side Menu

- 601 ● Chicken Karaage (5pcs) **\$7.5**  
からあげ5個
- 604 ● Green Veggies (両切) **\$2.0**



# CHARCOAL GRILLED CHICKEN YAKITORI BOWL

焼き鳥丼

100%  
コシヒカリ  
Koshihikari

PORTION SIZE

M  
Standard Size

L  
Chicken: M Size  
Rice: 125% of M Size

XL  
Chicken: 200% of M Size  
Rice: 125% of M Size

Literally means "Charcoal grilled chicken", it's originally served with skewers. Juicy and tender chicken thighs in sweet sauce and all charred flavor, it's a favorite street food in Japan.

## 400 Charcoal Grilled Chicken Yakitori Bowl

焼き鳥丼

M \$6.2 L \$6.8 XL \$11.2

Charcoal grilled chicken in our special Yakitori sauce.



## 407 Half Boiled Egg Chicken Yakitori Bowl & Green Veggies Combo

おん玉焼きと鶏肉の組み合わせ  
M \$9.2 L \$9.8 XL \$14.2

## 406 Double Half Boiled Egg Chicken Yakitori Bowl

ダブルおん玉焼き丼  
M \$8.2 L \$8.8 XL \$13.2

Chicken Yakitori bowl with double half boiled eggs.



## 408 Melted Cheese Chicken Yakitori Bowl

とろーり3種のチーズ焼き鳥丼  
M \$8.8 L \$9.4 XL \$13.8

Sweet and savory charcoal grilled Chicken Yakitori bowl with shredded and melted cheese toppings.



## 404 Kimchi Chicken Yakitori Bowl

キムチ焼き鳥丼  
M \$7.8 L \$8.4 XL \$12.8

Chicken Yakitori bowl with kimchi topping.

## 407 Half Boiled Egg Chicken Yakitori Bowl

おん玉焼き鳥丼  
M \$7.2 L \$7.8 XL \$12.2

Chicken Yakitori bowl with half boiled egg topping.

# CHICKEN KARAAGE BOWL

からあげ丼

100%  
コシヒカリ  
Koshihikari

PORTION SIZE

M  
Standard Size

L  
Chicken: M Size  
Rice: 125% of M Size

XL  
Chicken: 200% of M Size  
Rice: 125% of M Size

Karaage is bite sized Japanese style fried chicken marinated in soy sauce. It's a dish beloved by locals of all ages.

## 410 Chicken Karaage Bowl

からあげ丼

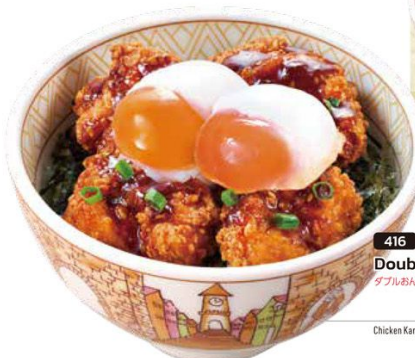
M \$6.9 L \$7.5 XL \$11.9

Sukiya's juicy chicken Karaage served with warm Japanese rice and half boiled egg on top.



## 410 Chicken Karaage Bowl & Salad Combo

からあげサラダセット  
M \$10.4 L \$11.0 XL \$15.4



## 416 Double Half Boiled Egg Chicken Karaage Bowl

ダブルおん玉からあげ丼  
M \$7.8 L \$8.4 XL \$12.8

Chicken Karaage bowl with double half boiled eggs.



## 411 Kimchi Chicken Karaage Bowl

キムチからあげ丼  
M \$8.5 L \$9.1 XL \$13.5

Chicken Karaage bowl with kimchi topping.



## 415 Melted Cheese Chicken Karaage Bowl

とろーり3種のチーズからあげ丼  
M \$9.5 L \$10.1 XL \$14.5

Juicy chicken Karaage bowl with shredded and melted cheese toppings.

Prices stated are inclusive of GST. The pictures are only for reference.

## Value Price Combo

すき家のお得なセット



青菜セット  
+ \$2.0



サラダセット  
+ \$3.5



高菜セット  
+ \$3.5



からあげセット  
+ \$4.5

## Choice of Drink 16oz

- Fuze Tea Ice Lemon Tea
- Coca-Cola Original Taste
- Minute Maid Refresh Orange
- Sprite
- Green Tea (ICE/HOT)
- Coca-Cola Zero Sugar
- Dasani Bottled Water

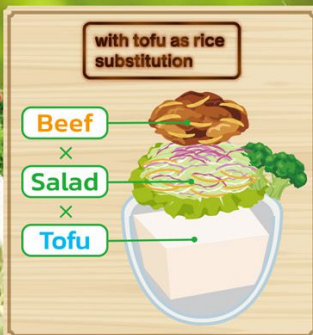
## Recommended Side Menu

- 601 Chicken Karaage (5pcs) からあげ5個 \$7.5
- 604 Green Veggies 青菜 \$2.0



# LOW CARB BOWL

ローカーボ丼



130

## Low Carb Gyudon

ローカーボ牛丼

**M \$5.9**



Gyudon with tofu as rice substitution with salad and sesame dressing. A healthier option for your meal.

Topping options available.

134

## Low-Carb Chicken Yakitori Bowl

ローカーボ焼き鳥丼

**M \$6.9**

Chicken Yakitori bowl with tofu as rice substitution.



133

## Kimchi Low Carb Gyudon

キムチローカーボ牛丼

**M \$7.5**

Low carb gyudon with kimchi.

132

## Okra Low Carb Gyudon with Dashi Sauce

和風だし香るオクラローカーボ牛丼

**M \$7.5**

Low carb gyudon with okra topping. An option with more vegetables.



# TERIYAKI SALMON BOWL

照焼サーモン丼

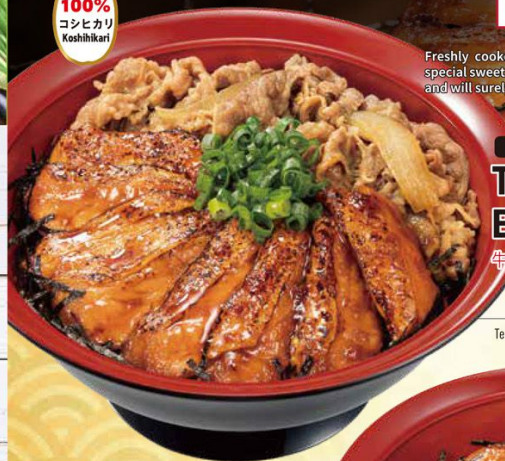
100%  
コシヒカリ  
Koshihikari

PORTION SIZE

M  
Standard Size

L  
Salmon: M  
Rice: 125% of M Size

Freshly cooked Norwegian salmon, coated in Sukiyaki's special sweet and savory teriyaki sauce. It's full of umami and will surely hit all the right notes in your taste buds.



425

## Teriyaki Salmon Bowl with Beef

牛あいがけ照焼サーモン丼

**M \$14.9** Rice (L) **L \$15.5**

Teriyaki Salmon bowl with Sukiyaki's signature simmered beef.

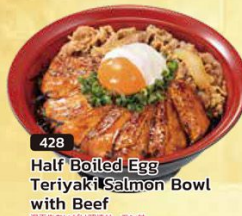
426

## Half Boiled Egg Teriyaki Salmon Bowl

温玉照焼サーモン丼

**M \$13.4** Rice (L) **L \$14.0**

Teriyaki Salmon bowl with half boiled egg topping.



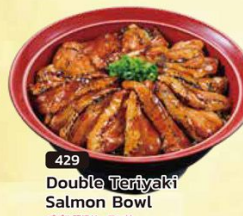
428

## Half Boiled Egg Teriyaki Salmon Bowl with Beef

温玉あいがけ照焼サーモン丼

**M \$15.9** Rice (L) **L \$16.5**

Teriyaki Salmon bowl with Sukiyaki's signature simmered beef and half boiled egg.



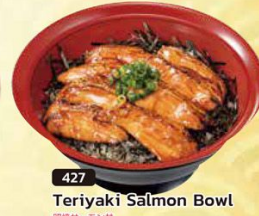
429

## Double Teriyaki Salmon Bowl

ダブル照焼サーモン丼

**M \$20.9** Rice (L) **L \$21.5**

A double portion Teriyaki Salmon, double the pleasure!



427

## Teriyaki Salmon Bowl

照焼サーモン丼

**M \$12.4** Rice (L) **L \$13.0**

Freshly cooked salmon in sweet and savory shiny Teriyaki glaze.

## Value Price Combo

すき家のお得なセット



Green Veggies Combo  
両食セット **+\$2.0**



Salad Combo  
サラダセット **+\$3.5**



Tofu Combo  
豆腐セット **+\$3.5**



Chicken Karaage Combo  
からあげセット **+\$4.5**



両食セット **+\$1.6**

## Choice of Drink 16oz

- Fuze Tea Ice Lemon Tea
- Coca-Cola Original Taste
- Minute Maid Refresh
- Sprite
- Green Tea (ICE/HOT)
- Coca-Cola Zero Sugar
- Dasani Bottled Water

## Recommended Side Menu

- 601 Chicken Karaage (5pcs) **\$7.5**

- 604 Green Veggies **\$2.0**

Prices stated are inclusive of GST. The pictures are only for reference.



# MEAT COMBINATION BOWL

肉あいかけ丼

100%  
コシヒカリ  
Koshihikari

For you who want to enjoy more than one kind of meat! Choose from our signature beef, beef yakiniku, and chicken yakitori for a deluxe rice bowl with double topping!

500 Beef & Yakiniku

Gyudon/  
Beef Yakiniku  
Combination Bowl

牛肉/焼肉あいかけ丼

M \$9.9 L \$10.5

Beef and Beef Yakiniku double topping.

501 Beef & Yakitori

Gyudon/  
Chicken Yakitori  
Combination Bowl

牛肉/焼き鳥あいかけ丼

M \$8.9 L \$9.5

Beef and charcoal grilled Chicken Yakitori double topping.

503 Beef & Yakiniku

Half Boiled Egg  
Gyudon/  
Beef Yakiniku  
Combination Bowl

おん玉牛肉/焼肉あいかけ丼

M \$10.9 L \$11.5

Beef and Beef Yakiniku double topping with half boiled egg.

502 Yakiniku & Yakitori

Beef Yakiniku/  
Chicken Yakitori  
Combination Bowl

焼肉/焼き鳥あいかけ丼

M \$10.9 L \$11.5

Beef Yakiniku and charcoal grilled Chicken Yakitori double topping.

504 Beef & Yakitori

Half Boiled Egg  
Gyudon/  
Chicken Yakitori  
Combination Bowl

おん玉牛肉/焼き鳥あいかけ丼

M \$9.9 L \$10.5

Beef and charcoal grilled Chicken Yakitori double topping with half boiled egg.

505 Yakiniku & Yakitori

Half Boiled Egg  
Beef Yakiniku/  
Chicken Yakitori  
Combination Bowl

おん玉焼肉/焼き鳥あいかけ丼

M \$11.9 L \$12.5

Beef Yakiniku and charcoal grilled Chicken Yakitori double topping with half boiled egg.

Prices stated are inclusive of GST. The pictures are only for reference.

## Value Price Combo

すき家のお得なセット

  
Green Veggies Combo  
青菜セット +\$2.0

  
Change to Shrimp Ball  
+\$1.6

  
Salad Combo  
サラダセット +\$3.5

  
Change to Shrimp Ball  
+\$1.6

  
Tofu Combo  
冷奴セット +\$3.5

  
Change to Shrimp Ball  
+\$1.6

  
Chicken Karaage Combo  
からあげセット +\$4.5

  
Change to Shrimp Ball  
+\$1.6

## Choice of Drink 16oz

- Fuze Tea Ice Lemon Tea
- Coca-Cola Original Taste
- Minute Maid Refresh Orange
- Sprite
- Green Tea (ICE/HOT)
- Coca-Cola Zero Sugar
- Dasani Bottled Water

## Recommended Side Menu

- 601  
● Chicken Karaage (5pcs)  
からあげ5個 \$7.5
- 604  
● Green Veggies 青菜 \$2.0



# SIDE DISH

サイドメニュー



**601**  
**Chicken Karaage**  
(3pcs) からあげ 3個 **\$4.5**  
(5pcs) からあげ 5個 **\$7.5**  
(10pcs) からあげ10個 **\$14.0**  
(15pcs) からあげ 15個 **\$20.0**



**600**  
**Beef Plate**  
牛皿 **\$4.0**  
Double Portion 倍量 **\$8.0**



**602**  
**Beef Yakiniku Plate**  
焼肉皿 **\$6.0**  
Double Portion 倍量 **\$12.0**



**603**  
**Chicken Yakitori Plate**  
焼き鳥皿 **\$5.0**  
Double Portion 倍量 **\$10.0**



**620**  
**Teriyaki Salmon Plate**  
照焼サーモン皿 **\$11.4**  
Double Portion 倍量 **\$22.8**



**604**  
**Green Veggies**  
青菜 **\$2.0**



**605**  
**Salad**  
サラダ **\$3.5**



**636**  
**Shrimp Ball Miso Soup**  
海老団子みそ汁 **\$3.9**



**628**  
**Tofu**  
冷奴 **\$3.5**

**606** Kimchi キムチ ..... **\$1.8**  
**607** Half Boiled Egg おん玉 ..... **\$1.5**  
**608** Okra オクラ ..... **\$1.8**

**609** Spring Onion 青ねぎ ..... **\$1.0**  
**611** Miso Soup みそ汁 ..... **\$1.8**  
**610** Rice ごはん ..... **M \$2.0 L \$2.8**

## Drink ドリンク

**650** Fuze Tea Ice Lemon Tea レモンティー ..... **\$2.8** **B** **4s**  
**651** Coca-Cola Original Taste コーラ ..... **\$2.3** **C** **8s**  
**652** Coca-Cola Zero Sugar コーラゼロ ..... **\$2.3** **B** **0s**  
**653** Sprite スプライト ..... **\$2.3** **B** **5s**

**741** Green Tea (ICE/HOT) グリーンティー ..... **\$2.8** **A** **1s**  
**655** Minute Maid Refresh Orange ミンутаメイドリフレッシュ ..... **\$2.7** **C** **7s**  
**654** Dasani Bottled Water ダサニ水(ボトル) ..... **\$2.0** **A** **0s**

## KIDS MEAL

お子様セット



**450**  
**Kids Beef Plate**  
お子様牛丼 **\$6.5** **C** **10s**



Nutri-Grade is based on default preparation (before addition of ice)



**451**  
**Kids Chicken Karaage Plate**  
お子様からあげ丼 **\$6.5** **C** **10s**

# Sukiya's Drink

No ice option is available with +\$1.0 of additional charge.

## YUZU



**748**  
**Earl Grey Yuzu Tea**  
ゆず紅茶 **\$3.8** **B** **5s**

**749**  
**Matcha Yuzu Tea**  
ゆず抹茶 **\$4.3** **B** **5s**

Nutri-Grade is based on default preparation (before addition of ice)

## Milk Tea

Sugar level | None (0%) | Less (50%) | Regular (100%)



**700**  
**Matcha Latte**  
抹茶ラテ **\$4.5** **D** **7s**

**703**  
**Earl Grey Tea Latte**  
紅茶ラテ **\$3.8** **D** **7s**

Nutri-Grade is based on preparation at 100% sugar (before addition of ice)

## Peach Tea

Sugar level | None (0%) | Less (50%) | Regular (100%)



**716**  
**Matcha Peach Tea**  
抹茶ピーチティー **\$4.3** **D** **13s**

**715**  
**Earl Grey Peach Tea**  
アールグレイピーチティー **\$3.8** **D** **13s**

Nutri-Grade is based on preparation at 100% sugar (before addition of ice)

Prices stated are inclusive of GST. The pictures are only for reference.





# What is Gyudon?

Koshihikari short grain rice with a superb texture and mild sweetness that brings out the true flavor of the ingredients.

Tender beef and fresh onion simmered to perfection.

Fragrant and sweet shoyu-based sauce.

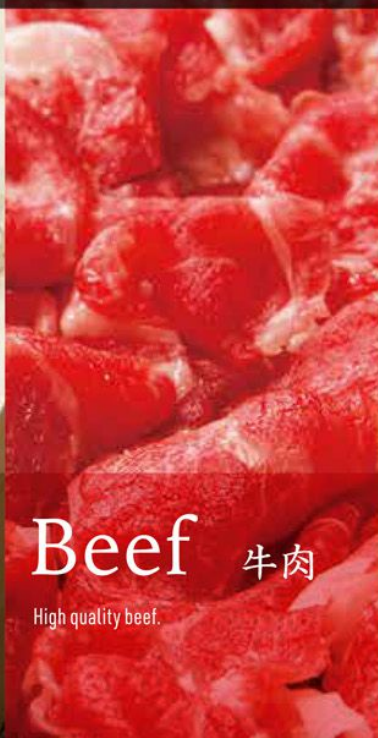
Sukiya has created a dish that embodies the essence of Japanese food, with a taste that will take you all the way to Japan.

## From The Best Ingredients



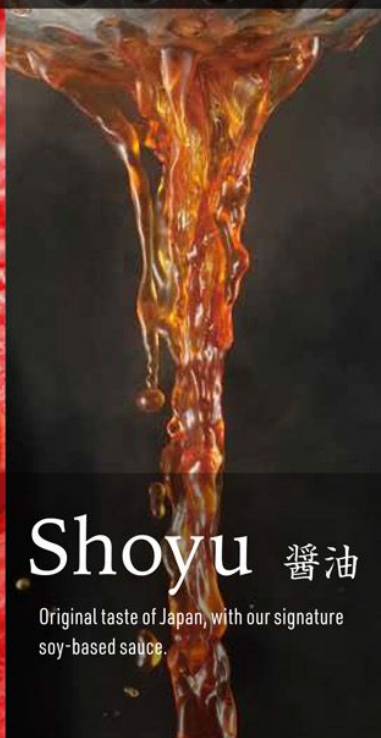
### Rice 米

100% Japanese koshihikari, a carefully selected short-grain rice for gyudon. Soft, moist, springy and slightly sweet.



### Beef 牛肉

High quality beef.



### Shoyu 醤油

Original taste of Japan, with our signature soy-based sauce.

## Service



Sukiya is committed to providing 120% of customer service satisfaction. Firstly, table service. Even with our fast food system, we promise to provide a dining experience like any other restaurant without taking service charge. Second, quick service. Our motto is to serve a hearty meal as quickly as possible for our customer to enjoy.

## BRAND OF THE YEAR

"Brand of the Year" is awarded to the year's best brands by the highly regarded and UK-based World Branding Forum.

Brands are selected by public voting and market research.

Sukiya has been awarded "Brand of the Year" for nine runnings since 2016.



RESTAURANT CHAIN - JAPAN  
LONDON 2024 - 2025

"Brand of the Year" is used under license from World Branding Forum CIC



## SUKIYA

Sukiya was first opened in 1982 and has maintained our quality of beef ever since. Now we have expanded to 1,952 stores in Japan alone, making us the biggest gyudon chain nationwide. We are committed into quality control to serve a hygienic, safe, delicious, and affordable gyudon. Now we have various options for everyone's preference. No matter whether you are dining alone, with family, or friends, we promise to offer the best dining experience.

\*1,952 stores as of 31th December 2023

Follow Us on Social Media

